

Summary Questions

1 a: What is the basic unit of structure and function in an animal?
(and in all living things)

1a. Answer: Cells

1b. Arrange in order from simplest to most complex structure:
tissue, system, cell, organ

1b. Answer: cell, tissue, organ, system

2a. What are four major functions of animals?

2a. Answer:

- 1. obtaining food and oxygen**
- 2. maintaining a balance inside and out**
- 3. movement**
- 4. reproduction**

Summary Questions

2b: How do animals obtain food?

2b. Answer: animals must feed on
other organisms

2c: Why is movement important for
animals?

2c. Answer: helps an animal to meet the
basic needs of survival and
reproduction

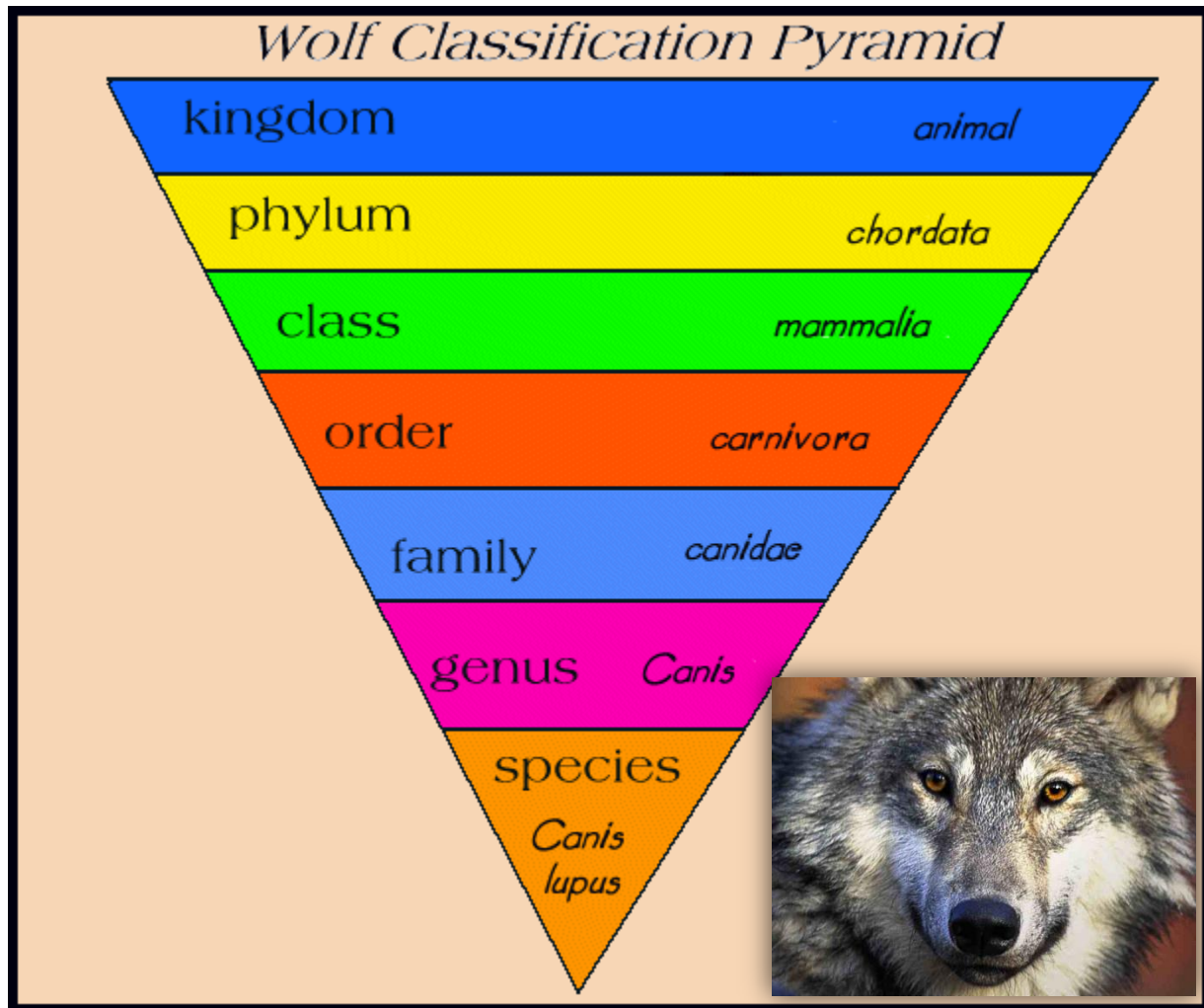
3a. What is a vertebrate?

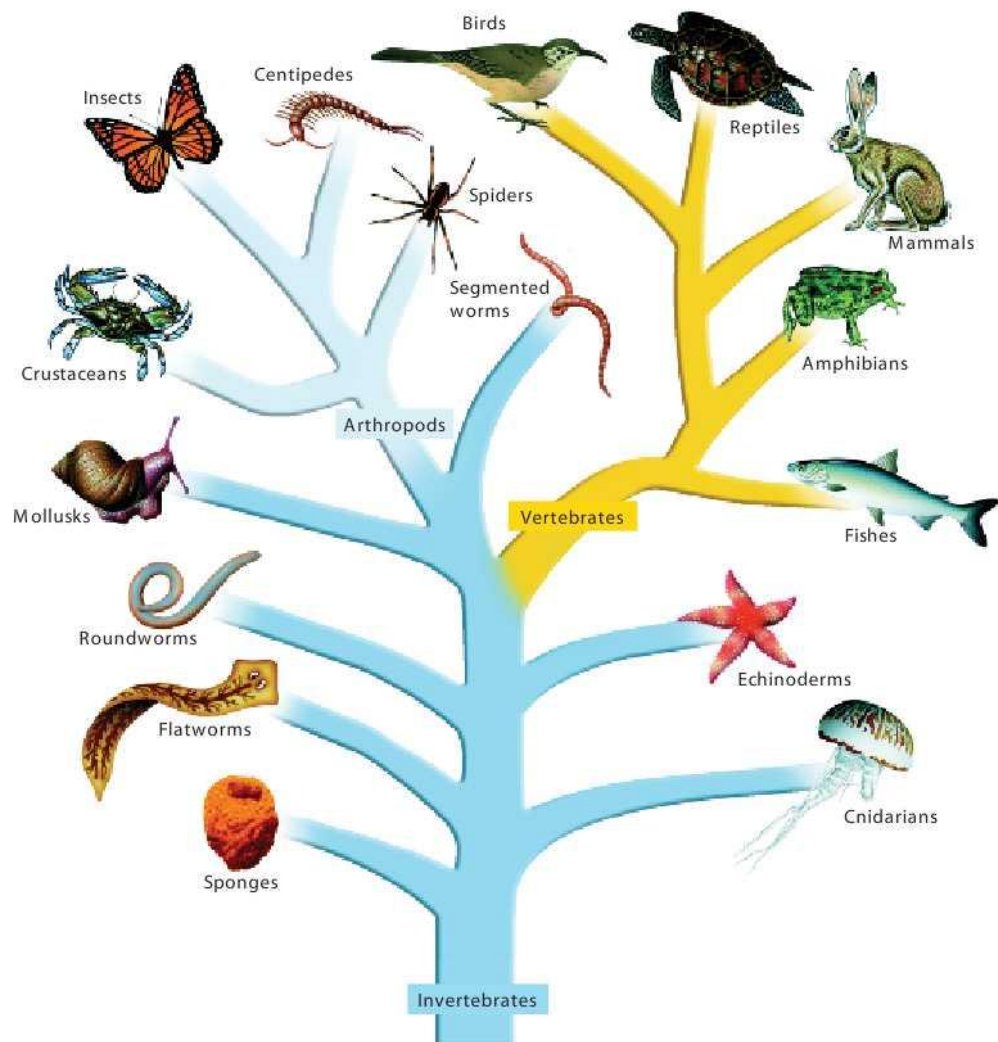
3a. Answer: an animal that has a
backbone

3b. How do biologists classify
organisms?

3b. Answer: they classify animals in to
phyla (singular: phylum)

Phylum comes after the Kingdom classification. An organism's Phylum is a more specific classification than its Kingdom.





3c: According to the branching tree shown in Figure 5, are reptiles more closely related to mammals or fishes? Explain your answer.

3c. Answer: reptiles are more closely related to mammals than fish because reptiles are closer to mammals than they are to fish on the diagram.